



Listening. Learning. Leading.



Know English. Know Success.



Authorized as an ETS Distributor in Pakistan.

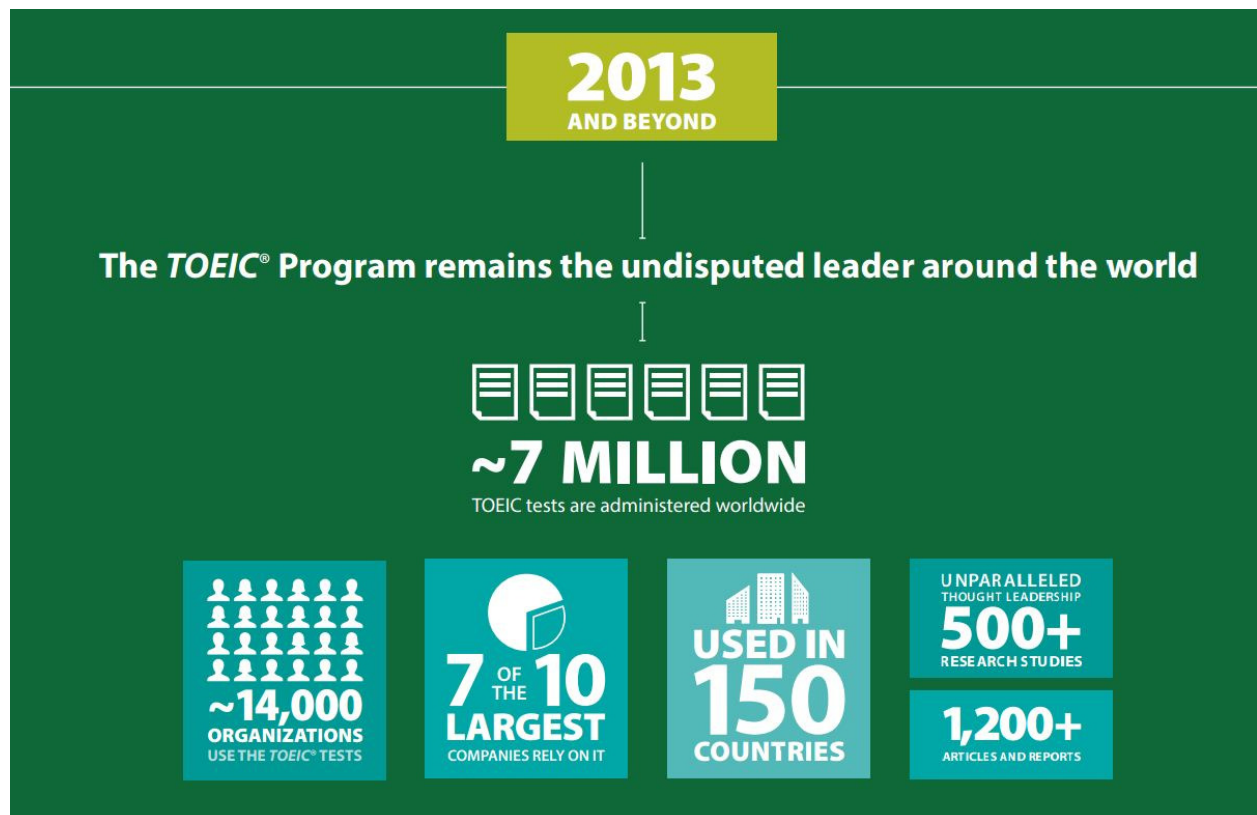
TOEIC (Test of English for International Communication)

Purpose:

TOEIC Test is to measure and certify the level of general and workplace English for people whose native language is not English.

TOEIC Tests are for:

- **Students:** Assess English skills and get an International English Certification.
- **Job seekers:** Get a competitive edge in the market by having an International English Certificate in your profile.
- **Professionals:** Get International Certification to compete in Global Market.
- **Academic Institutions:** Make sure your students have the right English Skills to succeed.
- **Foreign Universities:** Top Universities around the world use TOEIC for admissions of Foreign Students.



TOEIC L & R (Listening and Reading):

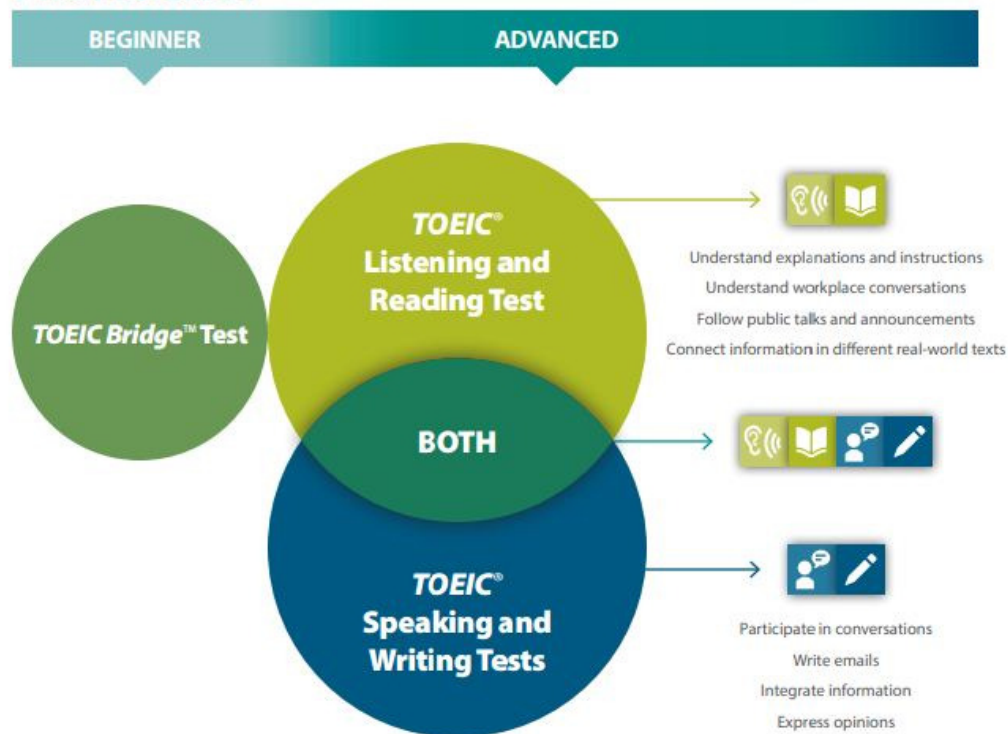
Designed for English-language learners at the beginner and intermediate levels. Test results provide proficiency levels and help test takers track their progress in and set goals for improving their English-language skills.

The two main test sections are:

1. Listening Comprehension and
2. Reading.

Which *TOEIC*® tests are right for you?

PROFICIENCY



TOEIC S & W (Speaking and Writing):

Test offer a common standard of measurement for comparing the language skills of current and potential employees as it directly measure the ability of nonnative speakers of English to listen, read, speak and write in English in the global workplace.

The two main test sections are:

1. Speaking and
2. Writing



Know English. Know Success.



Education

"Being able to certify our students' English level with the TOEIC test has allowed our Bachelor and Engineer graduates to acquire not only the basic competencies, but to also develop linguistic competencies that are needed to reach the local and international job market."

Milton Ascencion, Dean of the Language School, University Don Bosco
El Salvador

For the decisions that matter, the assessment you choose matters

Nothing compares to the TOEIC® Program

Designed to help you build the best workforce

Not all English tests are the same

There is a story behind every talent management decision

Turn your talent management decisions into success stories

A suite of resources to assess and build English skills.

ASSESSMENTS

TOEIC® Listening and Reading Test

The TOEIC Listening and Reading test is the most popular listening and reading test of workplace English in the world. It uses real-life workplace scenarios to assess intermediate-to-advanced English comprehension for the workforce with unparalleled reliability.

TEST FORMAT:

- Paper-and-pencil or online
- Two sections of 100 multiple-choice questions each
- Two hours

TOEIC® Speaking and Writing Tests

The TOEIC Speaking and Writing tests deliver unsurpassed accuracy when measuring intermediate-to-advanced English communication skills for the workforce. A minimum of three different raters contribute independently to the final test score to ensure reliable, fair and unbiased results.

TEST FORMAT:

- Computer-based
- The TOEIC Speaking test has 11 questions and takes 20 minutes
- The TOEIC Writing test has 8 questions and takes 60 minutes

TOEIC Bridge™ Test

Designed for beginning learners, the TOEIC Bridge™ test focuses on listening and reading skills and is a helpful starting point to prepare for work in an international environment.

TEST FORMAT:

- Paper-and-pencil
- Two sections of 50 multiple-choice questions each
- 60 minutes



When used together, the TOEIC tests provide the most complete assessment of the English skills necessary for workplace success.

TEST READINESS

TOEIC® Official Learning and Preparation Course

The TOEIC Official Learning and Preparation Course is the only course created by the maker of the TOEIC tests to help test takers build their English skills and prepare to do their best on the TOEIC Listening and Reading test.

THE COURSE:

- Uses real-life workplace scenarios and tasks that employees might encounter every day
- Has more than 1,000 authentic TOEIC test questions, which is more than any other online preparation product available
- Provides individualized feedback on progress with suggestions for improvement
- Is self-paced and accessible online 24 hours a day, 7 days a week

TOEIC® Test Preparation Materials

To help test takers get ready for test day success, a variety of official preparation products are available.

TEST PREPARATION TOOLS INCLUDE:

- Free sample questions
- *Tactics for TOEIC® Listening and Reading Test*
- *Tactics for TOEIC® Speaking and Writing Tests*
- TOEIC® Speaking and Writing Online Preparation Tool

PROFESSIONAL DEVELOPMENT

Propell® Workshops

The Propell® Workshops provide English-language teachers and corporate trainers with instructional techniques and strategies.

THE WORKSHOPS:

- Help prepare students for the TOEIC tests
- Are led by trained specialists in English-language learning
- Enhance teaching and curriculum development skills

SIMPLE
CONTEMPORARY IMPACTFUL
PROFESSIONAL
DIVERSE GLOBAL
PERSUASIVE



For the decisions that matter, the assessment you choose matters.

Nothing compares to the *TOEIC*® Program.



Keys to success:

- 1 Make it matter**
Highlight the importance of workplace English skills in today's global economy and the necessity of measuring those skills.
- 2 Illustrate with stories**
Share a variety of compelling, real-life examples of the relationship between English proficiency and a strong, effective workforce.
- 3 Simplify the choice**
Reinforce the importance of choosing the right measurement tool and the costs of choosing the wrong one. Explain what to look for in a test and why the TOEIC Program is the right choice.

THE TOEIC® QUALITY DIFFERENCE

TEST DESIGN

- Assesses English skills accurately and fairly, regardless of an individual test-taker's background
- Follows a framework built upon strong academic research
- Uses evidence-centered design, developed by ETS researchers

TEST DEVELOPERS

- Have advanced degrees and strong backgrounds in international English-language teaching
- Are extensively and frequently trained to meet strict quality standards
- Conduct research that contributes to the improvement of English-language learning and assessment

TEST SCORES

- Can be compared across testing administrations over time and location
- Provide an accurate evaluation of each test-taker's strengths and weaknesses to guide test-takers toward areas of improvement
- Are accepted at nearly 14,000 companies and organizations worldwide in 150 countries



GLOBAL REACH

- With nearly 7 million tests administered in 2012, TOEIC tests are the most widely-used assessments of English proficiency for the workforce
- Nearly 14,000 organizations in 150 countries use the TOEIC tests
- 7 of the 10 largest companies in the world rely on the TOEIC tests

SUPERIOR SERVICE

Local entrepreneurs and offices within the ETS Preferred Network (EPN) sell and administer TOEIC tests, products and services, and provide the highest levels of on-demand support to clients around the world.

TOEIC associates work closely with organizations to:

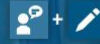
- Determine the level of English needed for a position
- Recommend the right TOEIC tests to administer
- Set the appropriate TOEIC score requirements
- Administer the TOEIC tests to candidates
- Score the tests and deliver results

PRODUCT CLAIMS



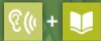
TOEIC® Listening and Reading Test

- It is the world's most popular English assessment for the workforce
- It is recognized around the world as the global standard in English language proficiency testing
- It offers highly reliable scores, with an average test form reliability coefficient of .92
- Questions are based on real-life workplace scenarios
- Paper-and-pencil or online formats make it easy to administer at any time



TOEIC® Speaking and Writing Tests

- The tests provide objective and fair measures to assess the global workforce
- Evaluators score only individual questions instead of entire sections to ensure fairness
- Each Speaking test could be scored by as many as 11 evaluators, each Writing test by as many as 9, for exceptionally fair and objective scoring
- Evaluators are monitored and calibrated daily to ensure their readiness for scoring
- Scoring process is monitored to ensure accuracy



TOEIC Bridge™ Test

- Designed to motivate beginner and low-intermediate learners by identifying strengths and weaknesses
- Fits current English-language teaching approaches in supporting independent learning
- Prepares students to take the TOEIC Listening and Reading test

TOEIC® Official Learning and Preparation Course

- Created to help test takers build their English skills and prepare for the TOEIC Listening and Reading test
- Uses real-life workplace scenarios and tasks that employees might encounter every day
- Has more than 1,000 authentic TOEIC test questions — more than any other online preparation product available
- Provides individualized feedback with suggestions for improvement
- Is self-paced and accessible online 24 hours a day, 7 days a week



Finance

"We use the TOEIC test as a fundamental part of our language training for new recruits."



TRAINING

Harness
the power
of English
proficiency.

Contact Information:

- If you have any questions, please contact us at:

Project Manager, NTS – ETS

National Testing Service – Pakistan (NTS)
Plot # 1-E, Street # 46, Sector I-8/2,
Islamabad.

Tel: +92-51-9101239

Mobile: 0334-3312114, 0337-0778778

Fax: +92-51-9258480

Email: ets_products@nts.org.pk

URL Link: <http://www.nts.org.pk//Products/ETS/TOEIC/toeic-introduction.php>

